





Willowmead

Supported Living Care Service

 1 Willowmead, Summer Road,
Surrey, KT8 9LR  020 8398 8664

Conditions we support, but are not limited to:

- Epilepsy
- Brain injury
- Autism
- Learning difficulties
- Sensory impairment
- Mental health
- Physical disabilities
- Other complex needs

Willowmead is a supported living care service based in East Molesey, Surrey. We offer a warm, nurturing environment with a holistic approach to care, encouraging a unique environment of support for young people and adults with autism, learning difficulties and mental health needs.

Everyone at Willowmead is committed to making people's lives better, enabling our residents to achieve their hopes and dreams through round the clock access to unprecedented levels of care and support. Our vision is to make a difference; to enable people to optimise their potential and enjoy full, rewarding lives.

Willowmead supports young individuals transitioning through the first years of young adult life. We support people with autism, learning disabilities, mental health and other complex needs. The service has evolved since it opened in 2015 to provide specialist support for people with emotionally unstable Personality Disorder/Borderline Personality Disorder and Attachment Disorder. The people supported at Willowmead are of mixed gender identities and their ages range from 18 to 65 years old.

Service Overview :

- Capacity up to 13
- Located in Surrey
- Suitable for all genders
- CQC Registered
- Multi-disciplinary team
- Positive behaviour support
- Communal living space
- Communal dining area
- Community garden
- Large summer house

Take a look around...



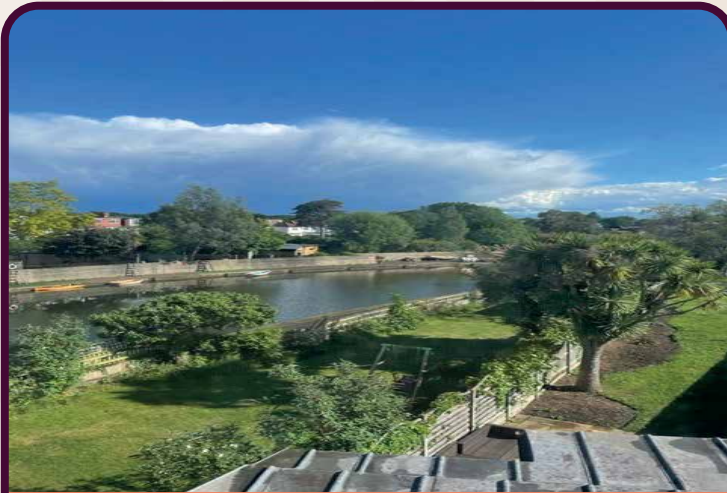
Outside Willowmead



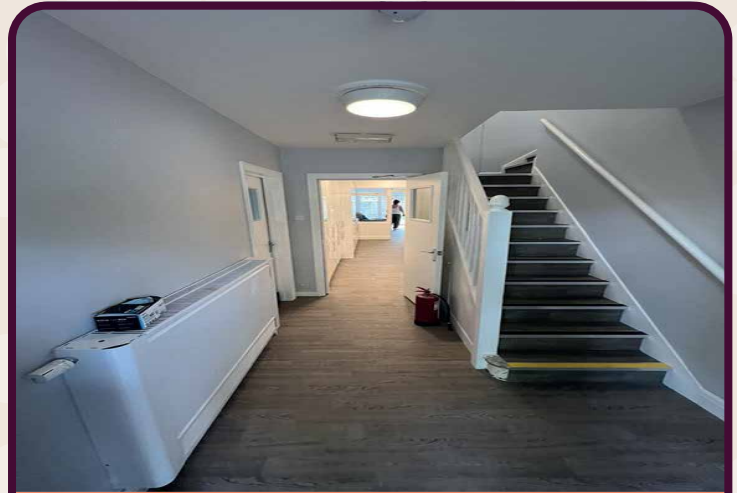
Spacious Garden



River Ember is opposite



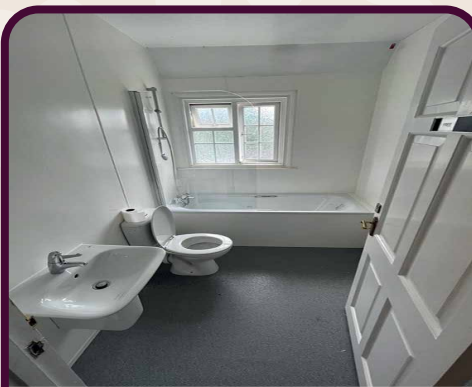
Beautiful view from Willowmead



Hallway with Natural Light



Communal Lounge



Bathroom with Natural Light



Spacious Communal Kitchen

Support at Willowmead is delivered differently across the house and in the studio flats. In the house, the team work with the young people we support to look at their future pathways, developing their interests, goals and future aspirations. Our links with local colleges and Surrey Choices combined with our teams' passion to support our young adults, enables us to explore further experiences to develop people's quality of life.

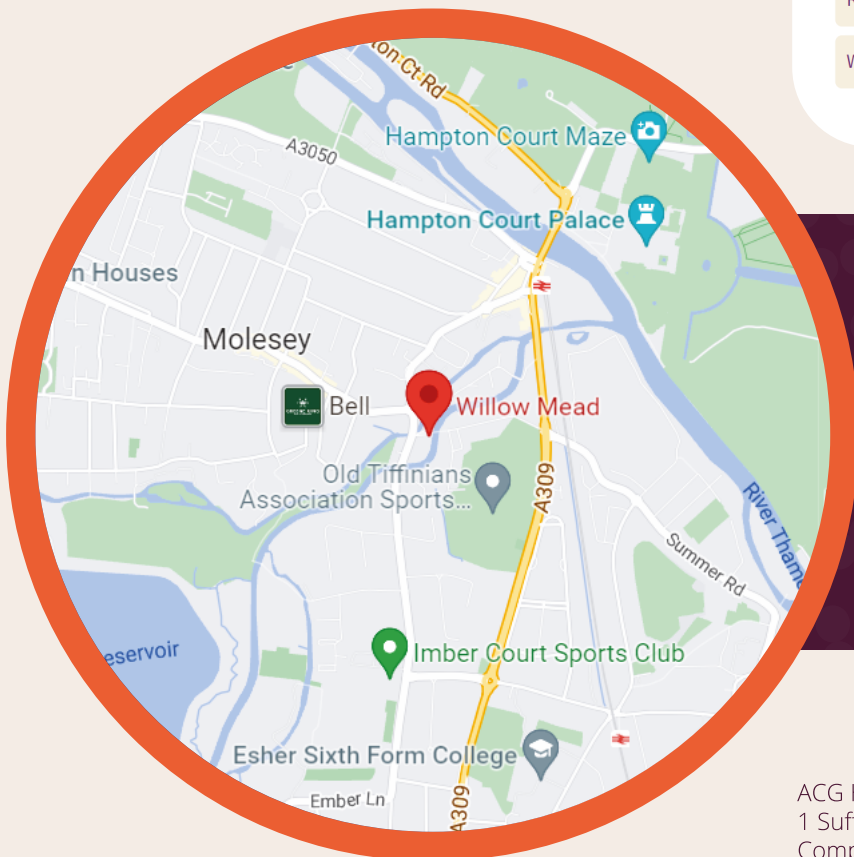
In the studio flats, staff support people who present complex needs and challenging behaviours. Staff work to develop care and support in safe and modified environment. Our team are trained in supporting people with Positive Behaviour Support, and alongside the Assistant Care Practitioners, staff are able to help people to develop community connections, linking in with different community projects.

At Willowmead we have aligned and agreed our strategic goals to define what we want our organisation to achieve. This means we have also aligned them with the five domains of the Care Quality Commission (CQC) inspection standards to ensure we provide the very best care possible to all our residents.



Are services

Safe?	Good
Effective?	Good
Caring?	Good
Responsive?	Good
Well-led?	Good



We're here, lets talk.

We're here to talk to you about any care needs you may require. We have a dedicated team ready to assist you with whatever you need. Should you wish to refer someone to our care or arrange a visit please contact our referrals team.



ACG Holdco Limited
 1 Suffolk Way, Sevenoaks, Kent, TN13 1YL
 Company Number 11157123, Registered in England and Wales.